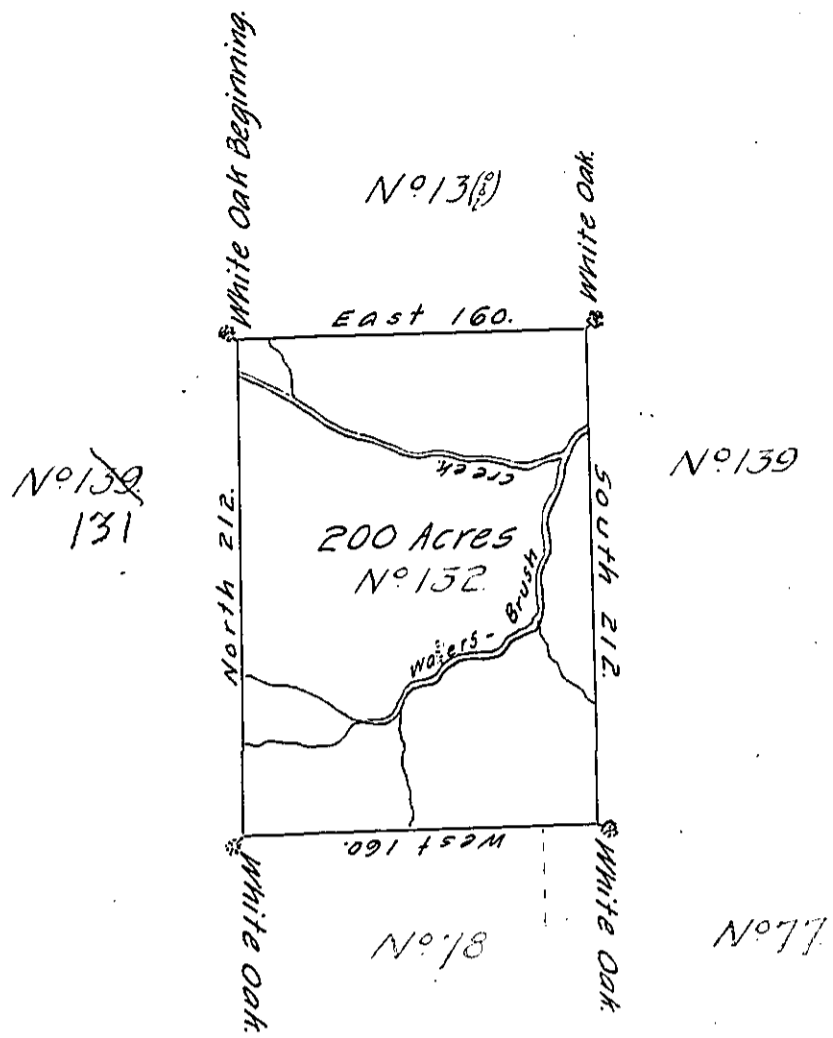


✓



The Above is a Draught of a Survey made in the Month-July 1785. In Pursu-
 or
 ance of Instructions from the Survey-General Dated the 22^d Day of Jan^y. 1785. Situ-
 ate on the North Side of the Ohio-on the Waters of Brush Creek in District No 2. Con-
 taining two hundred Acres with Allowance of 6th Cent.

Dan! Leet, D.S.

John Lukens, Esq. Surv. Gen.

IN TESTIMONY that the above is a copy of the original remaining on file in
 the Department of Internal Affairs of Pennsylvania, made
 conformably to an Act of Assembly approved the 16th day of
 February, 1833, I have hereunto set my Hand and caused
 the Seal of said Department to be affixed at Harrisburg,
 this.....seventeenth..... day of.....April..... 1906.

Geo. R. Harrison
 Secretary of Internal Affairs.